

An architectural rendering of the Bally's Chicago casino and hotel complex at dusk. The scene features a large, modern building with a prominent, angular, copper-clad facade on the left and a tall, curved glass skyscraper on the right. The glass tower has the 'Bally's' logo in red at its peak. In the foreground, a yellow Chicago Water Taxi boat is on the water, and a pedestrian walkway with people is visible on the right. A central black overlay contains the project name and details.

Bally's

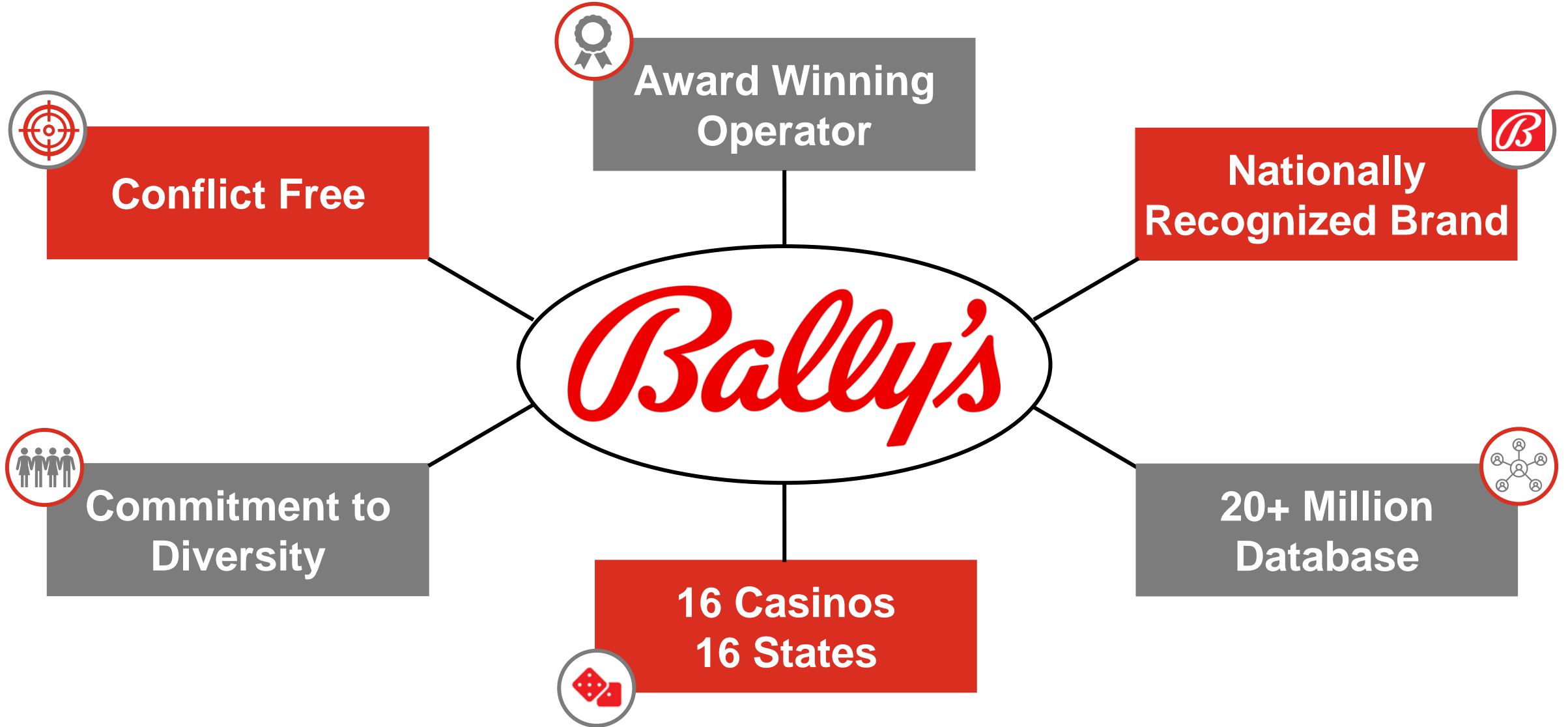
CHICAGO

APRIL 2022



An architectural rendering of a modern waterfront development at dusk. The scene features a large, multi-story building with a prominent, angular, metallic facade on the left and a tall, curved glass skyscraper on the right. The glass building has the 'Bally's' logo in red at its top. A wide, paved promenade runs along the water's edge, populated with pedestrians. In the foreground, a yellow 'CHICAGO WATER TAXI' boat is on the water, with several people on board. To the left, a fountain with multiple jets of water is illuminated. The sky is a deep blue with some light clouds, and the overall atmosphere is one of a vibrant, modern urban waterfront.

I. INTRODUCTION TO BALLY'S



Why Bally's Chicago?

Community ownership
Locally-focused **jobs**
Flexibility in project plans
New **green space**
Traffic **improvements**



An architectural rendering of the Bally's Chicago site plan at dusk. The scene features a large, modern building with a prominent, angular, metallic facade on the left and a tall, curved glass skyscraper on the right. The building's interior lights are on, and the glass reflects the sky. In the foreground, a yellow Chicago Water Taxi boat is on the water, with people on board. A fountain with multiple jets is on the left, and a pedestrian walkway with people is on the right. The sky is a deep blue with some clouds.

II. BALLY'S CHICAGO SITE PLAN

Temporary Facility



500 slots & 25 table games



2-3 food & beverage venues



Exploring other locations for temp.

Permanent Facility



Outdoor green space



Open campus



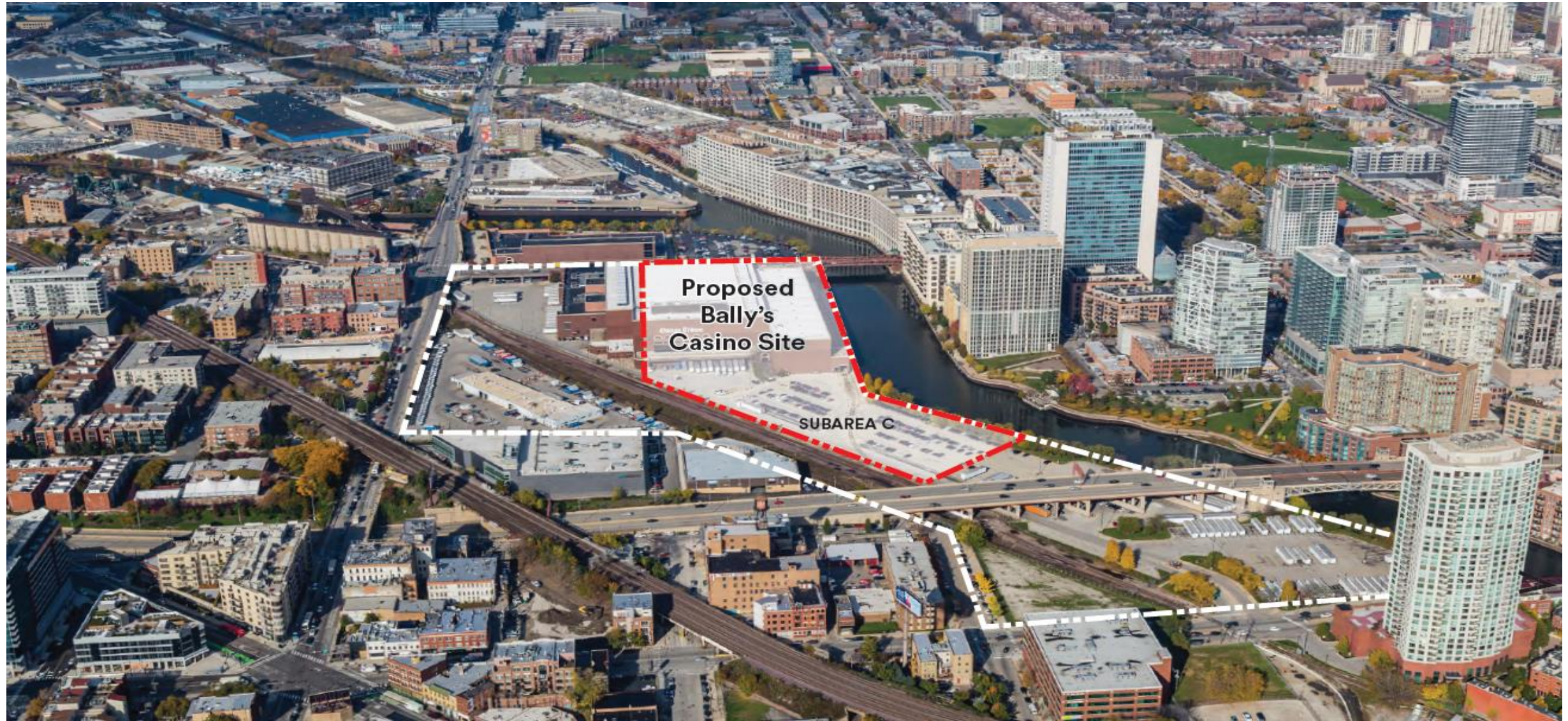
70,000 SF entertainment venue



20,000 SF exhibition space

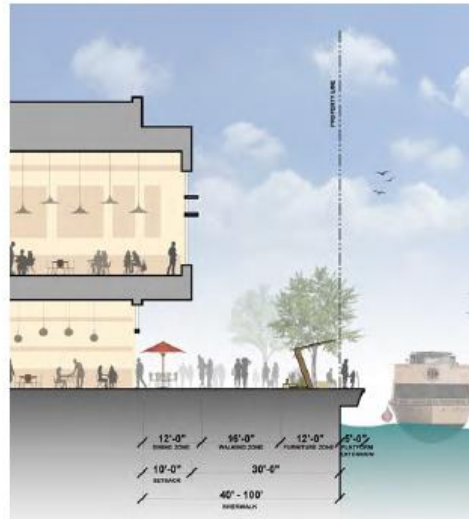
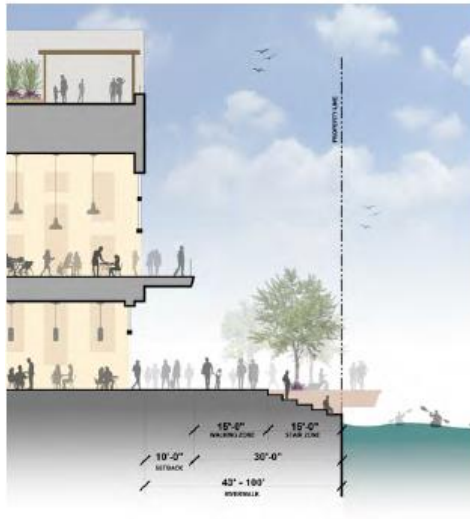


Bally's Chicago Tribune Site



River Walk: Active + Passive Recreation

2,100 Feet of Contiguous River Walk, Public Parks, Docks, Water Taxi, Restaurants + Amenities



Neighborhood: Mixed Use

Exciting New Vibrant, Urban and Walkable Community Connecting the City Neighborhoods



Traffic Analysis: Peak Hours

60% Lower

Weekday Morning Peak

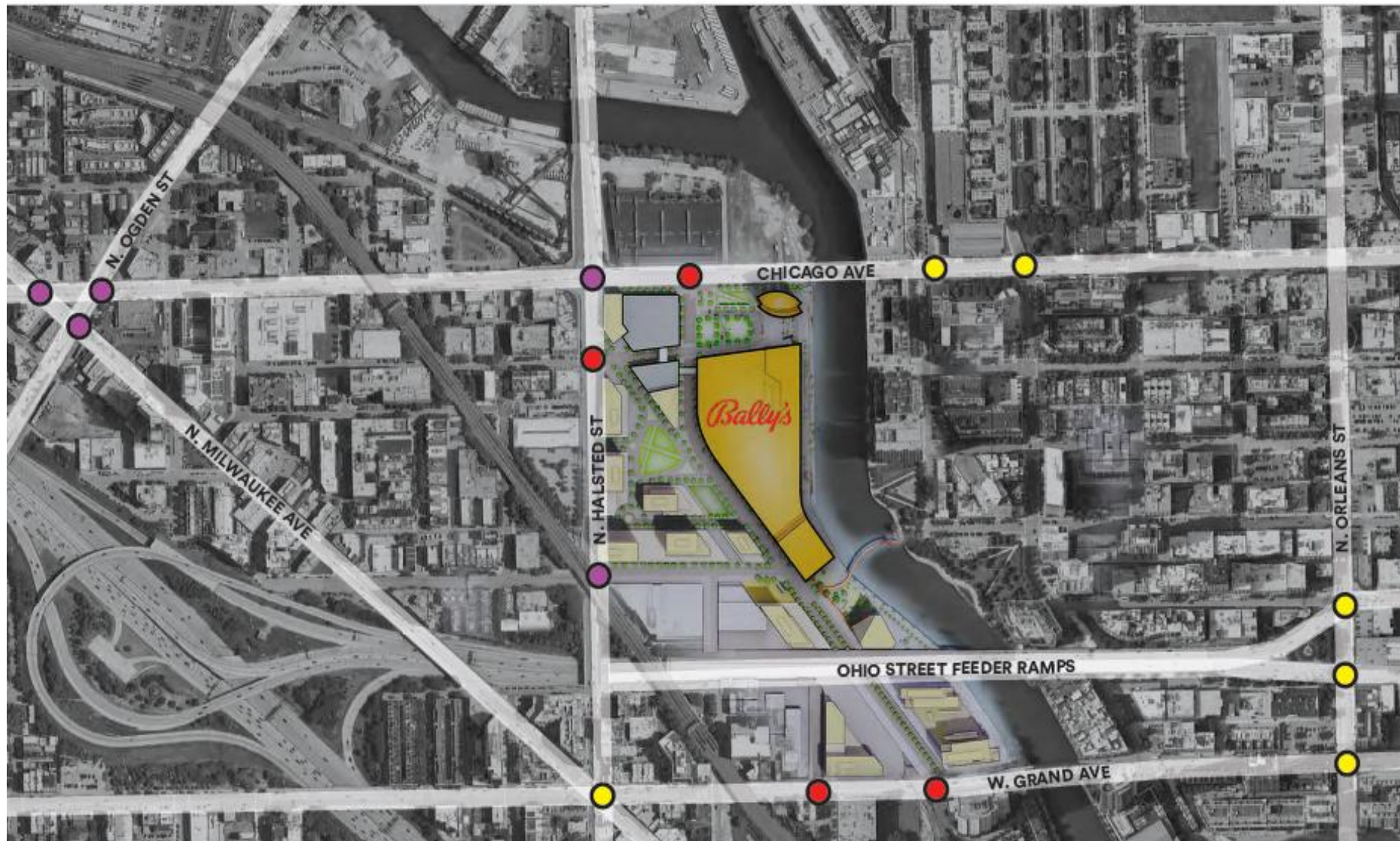
10% Lower

Weekday Evening Peak

15% Lower

Friday Evening Peak

Traffic Analysis: Key Takeaways



● NEW SIGNALS

● MODERNIZE EXISTING
SIGNAL SYSTEM

● RETIME + UPGRADE
PEDESTRIAN +
EXISTING SIGNALS

HALSTED ST
Roadway Improvements

An architectural rendering of a modern waterfront development at dusk. The scene features a large, angular building with a metallic, ribbed facade and a curved glass tower to its right. A red banner with the text "III. COMMUNITY" is overlaid across the middle. In the foreground, a yellow "CHICAGO WATER TAXI" boat is on the water, and a pedestrian walkway with people is on the right. A fountain is visible on the left.

III. COMMUNITY

Hiring and Workforce Development

Local Hiring

Job Creation

**Workforce
Development**

**Community
Engagement**

Community Rewards

Support Local Businesses



An architectural rendering of the Bally's Chicago casino and hotel complex at dusk. The image features two main buildings: a large, angular structure with a copper-colored, vertically-slatted facade on the left, and a tall, cylindrical glass skyscraper on the right. The copper building has a cantilevered upper section. In the foreground, a yellow Chicago Water Taxi boat is on the water, and a paved promenade with people is on the right. A central black box contains white text.

Bally's

CHICAGO

APRIL 2022



THANK YOU